

Installation Guide

Model:
SmartGard Dynamic Full



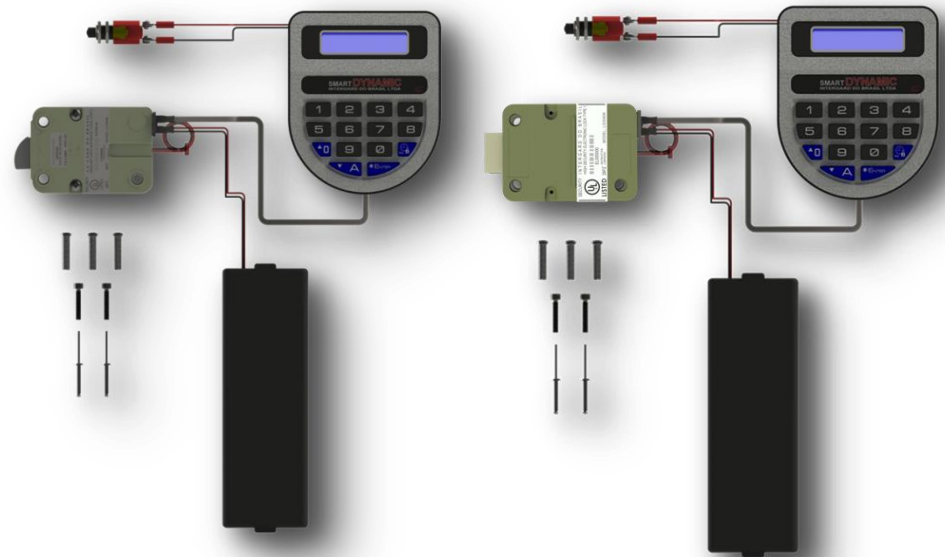
IG[®] INTERGARD
DO BRASIL LTDA

Kit Contents

- Smartgard Dynamic Keypad (MLS00036);
- Electronic Safe Lock Swingbolt 80E DYN {I – IV}:
 - SER80 Dynamic I – CJM00283;
 - SER80 Dynamic II – CJM00284;
 - SER80 Dynamic III – CJM00308;
 - SER80 Dynamic IV – CJM00309;

Swingbolt locks above are all the same. They're named from I to IV only to identify each one separately.

- Electronic Safe Lock Swingbolt 80E DYN A (CJM00293);
- Keypad fixation screws (CJM00230);
- Emergency power cable (CJM00212);
- Electronic Safe Lock screws (MEC00014);
- Battery box fixation rivet (ACE00006);
- Push Button (ACE00005);
- Big battery box (INJ00005);
- Small battery box with alarm board (CJM00274);
- Duracell's battery type C (BAT00002);



IG[®] INTERGARD
DO BRASIL LTDA

Smartgard Dynamic kit Description

Smartgard Dynamic Keypad
(MLS00036)



Keypad fixation screws
(MEC00230)



Push Button
(ACE00005)



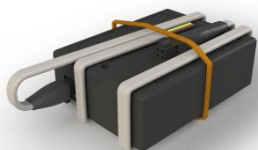
Electronic Safe Lock Swingbolt
80E DYN – {I – IV}¹ and DYN A
Lock (CJM00293)



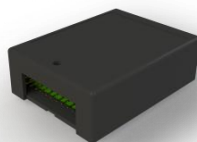
Electronic Safe Lock
fixation screws
(MEC00014)



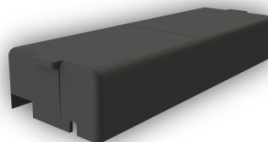
Small battery box with
alarm board
(CJM00274)



Small battery box with
distributor board
(CJM00228)



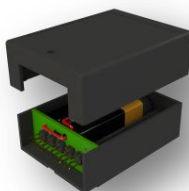
Big battery box
(INJ00005)



Big box battery fixation rivet
(ACE00006)

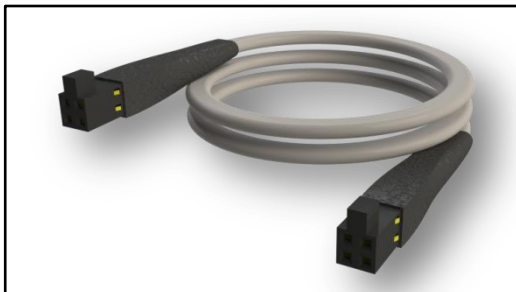


6 Duracell's Battery type C
(BAT00002)

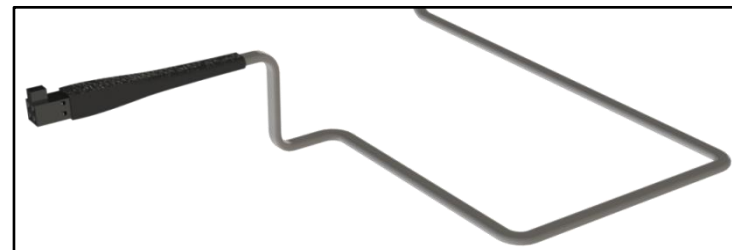


¹ Electronic Safe Lock Swingbolt 80E DYN codes – CJM00283 / CJM00284 / CJM00308 / CJM00309

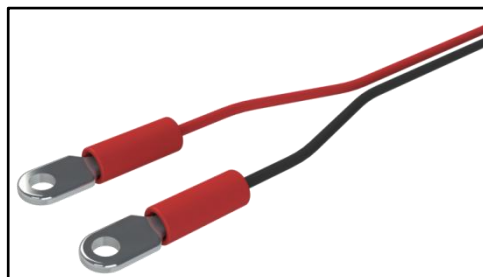
Cables Description



Safe lock and alarm signal cable **914mm**
(CJM00007) / Inter connect distribution board
cable **4000mm** (CJM00286)



Signal Cable
(CJM00213)



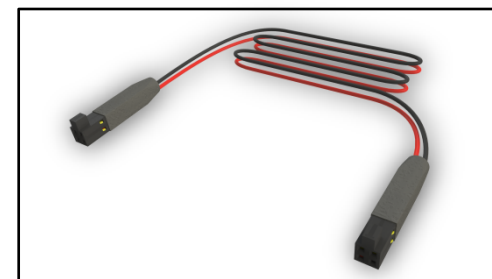
Open/Close door sensor cable
(CJM00131)



Emergency power cable
(CJM00212)



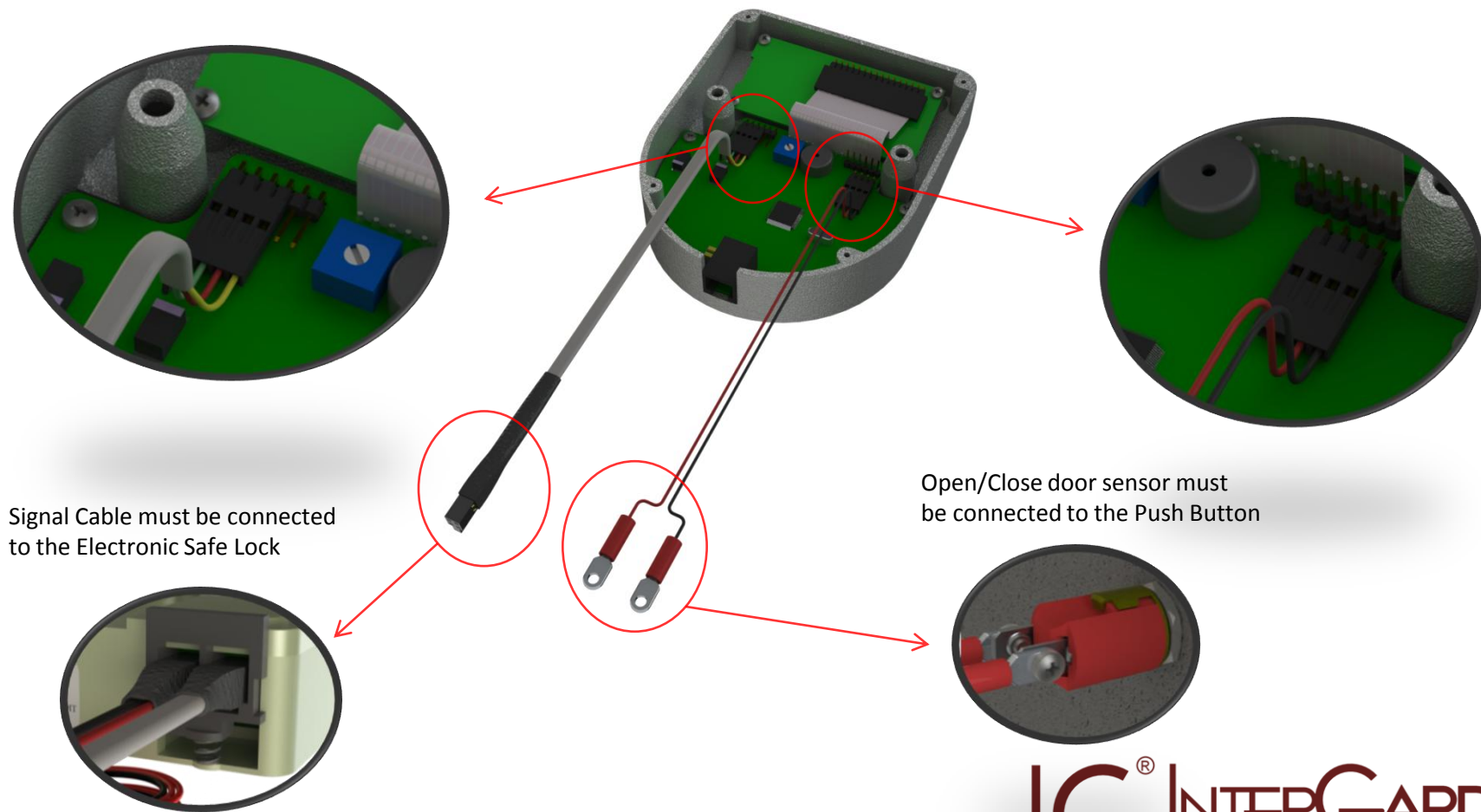
Power Assembly cable 800mm Modu - LG
(CJM00001)



Power Assembly cable 1000mm PR_VM
(CJM00285)

IG[®] INTERGARD
DO BRASIL LTDA

Smartgard Dynamic board connection cables



IG[®] INTERGARD
DO BRASIL LTDA

Smartard Dynamic Full Installation Steps



1st STEP:

- Take off the front cover with Smartgard Dynamic engraved (Figure 1);
 1. First check both access holes on keypad's side (Figure 2);
 2. Gently push with a fine point tool (Figure 3);
 3. Take off the cover pushing up the lock as placed (Figure 1);
 4. Fixation hole must be done with Ø3,4mm drill then use a M4 screw tap to fasten a n°8-32 screw (Figure 4);



Figure 1

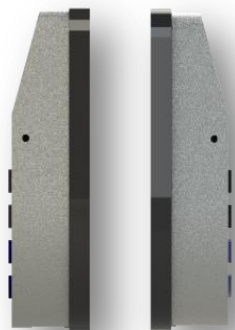


Figure 2



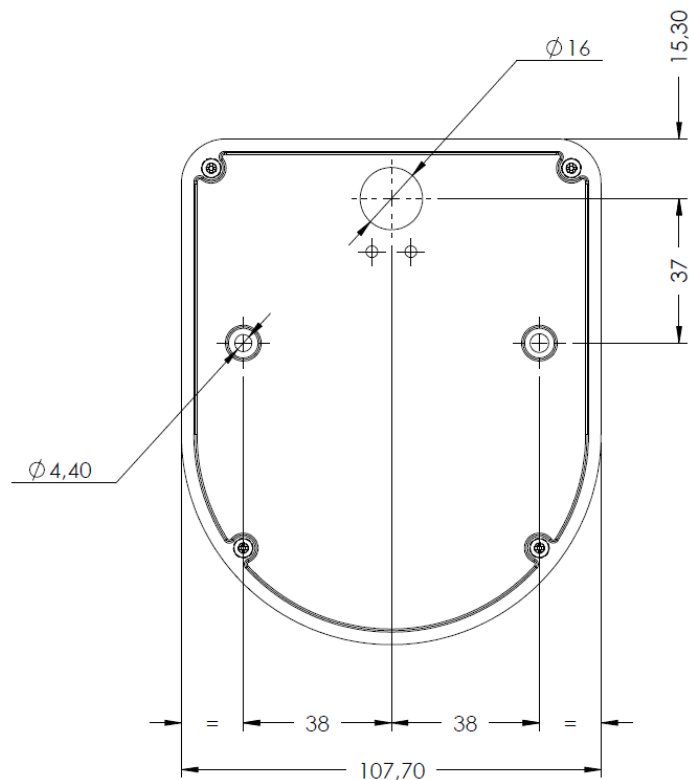
Figure 3



Figure 4

2nd STEP:

- Check the center between both holes, moving up 37mm then make a 14mm hole at safe's door;
- This hole will allow the cables' passage
- For the Ø4,40mm hole (ref.), fixation hole must be done with Ø3,4mm drill then use a M4 screw tap;



IG[®] INTERGARD
DO BRASIL LTDA

3rd STEP:

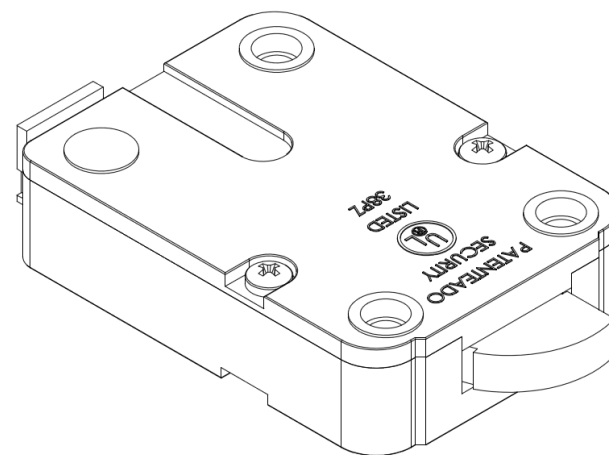
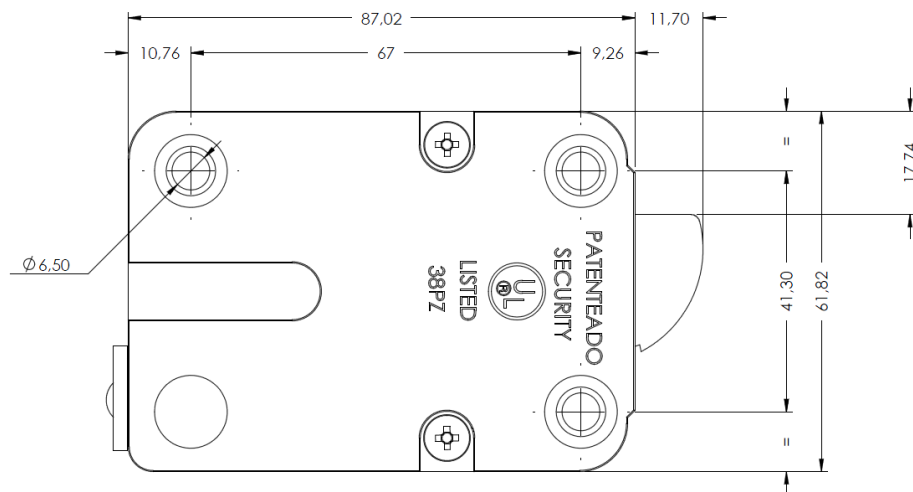
- Pass all the cables through a Ø14mm hole according to the previous step;
- Take the screws and fix the keypad at the safe's door;

Smartgard Dynamic fixation
screws



4th STEP:

- For the Ø6,50mm hole (ref.), fixation hole must be done with Ø5,3mm drill then use a ¼" screw tap ;
- Take care of the external cables which come from the safe lock before fixing it at the appropriate place at safe's door avoiding damages to them;



5th STEP:

- Check the correct way to place the Electronic Safe Lock;
- Take the screws and fix the Electronic Safe Lock at the safe's door;

Electronic Safe Lock fixation
screws



6th STEP:

- Take off the first nut (Figure 1);
- Nut removed (Figure 2);
- Fasten both Philips head screws, connecting black and red cables onto Push Button terminals (Figure 3);
- Make a Ø12mm hole on the safe's door hinge then install it. Position adjustment must be done with the nut (Figure 4);
- After installed, with the other nut, fix the Push Button (Figure 5);



Figure 1

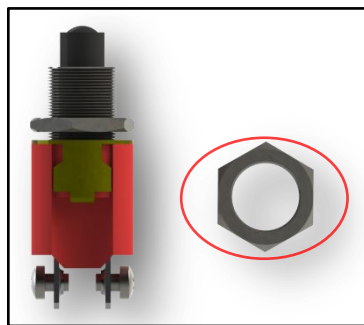


Figure 2

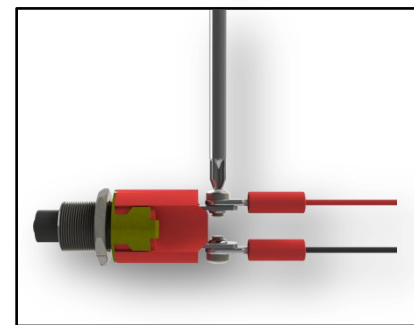


Figure 3

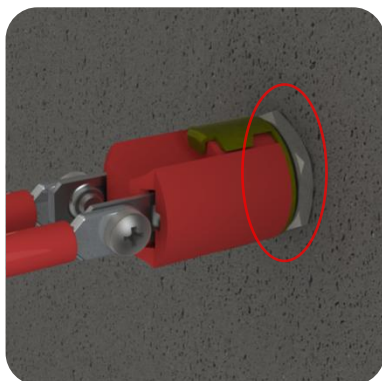


Figure 4



Figure 5

7th STEP:

- Cables, batteries and big box battery (Figure 1);
- Choose the best location to install the big battery box;
- Make the connection between the terminal and the big box battery (Figure 2);
- Install 6 batteries into the big box battery. Before it, check the polarities engraved inside the battery box (Figure 3);

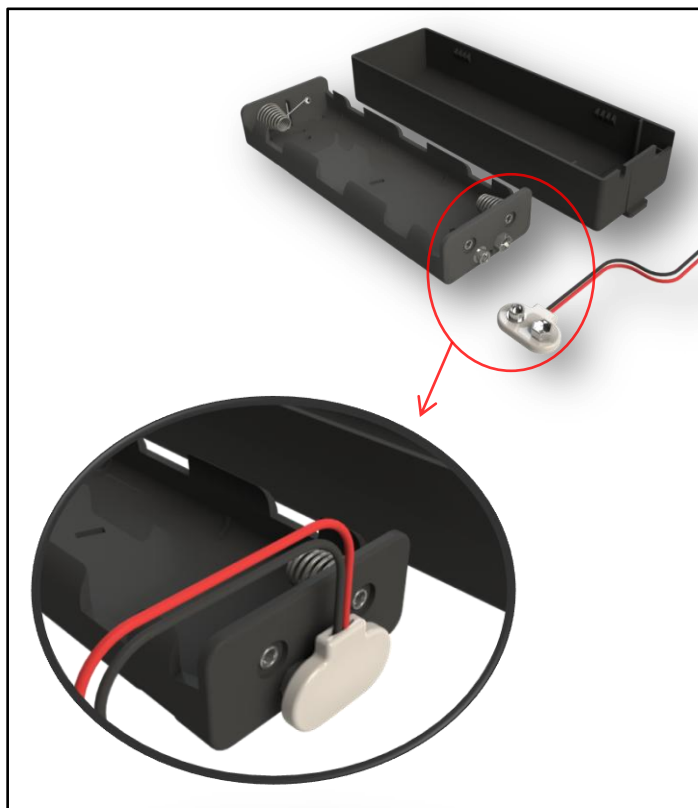


Figure 2



Figure 1

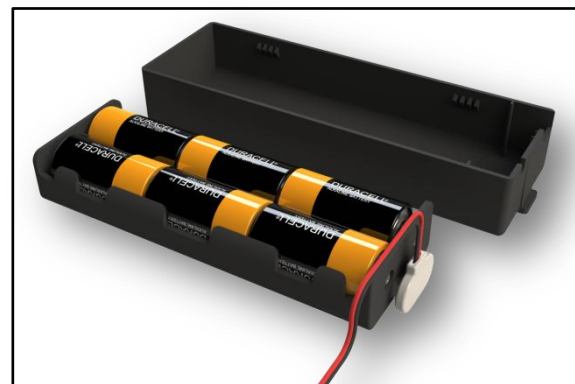


Figure 3

8th STEP:

- With the Electronic Safe Lock fixed, connect the cables to the board's terminal;
- Before you connect both cables (battery and signal), gently push down the lock connector and insert them (Figure 1);

Attention: Do not force the cables to remove them, a serious damage may occur to the cables or to the board pins!

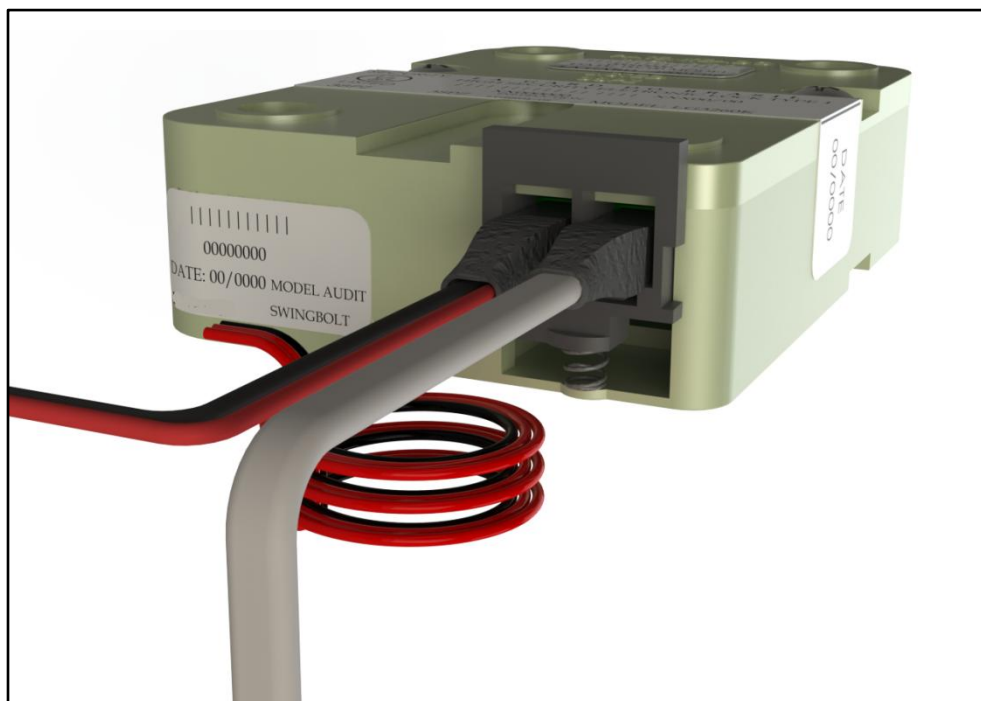


Figure 1

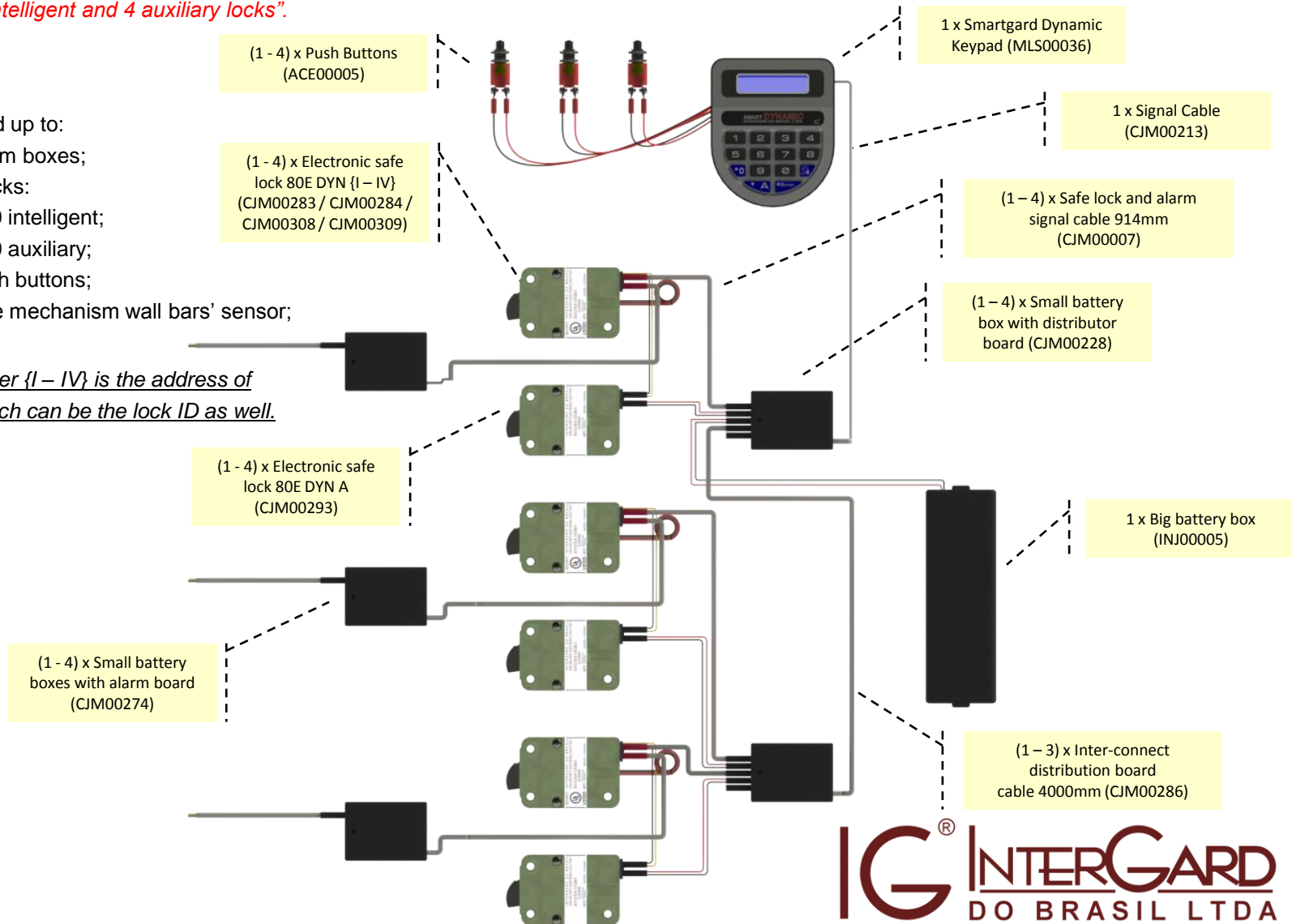
CONFIGURATIONS

"For UL installations a total of 8 locks may be employed 4 intelligent and 4 auxiliary locks".

OBS.:

- Configured up to:
 - 9 alarm boxes;
 - 18 locks:
 - 9 intelligent;
 - 9 auxiliary;
 - 9 push buttons;
 - 9 safe mechanism wall bars' sensor;

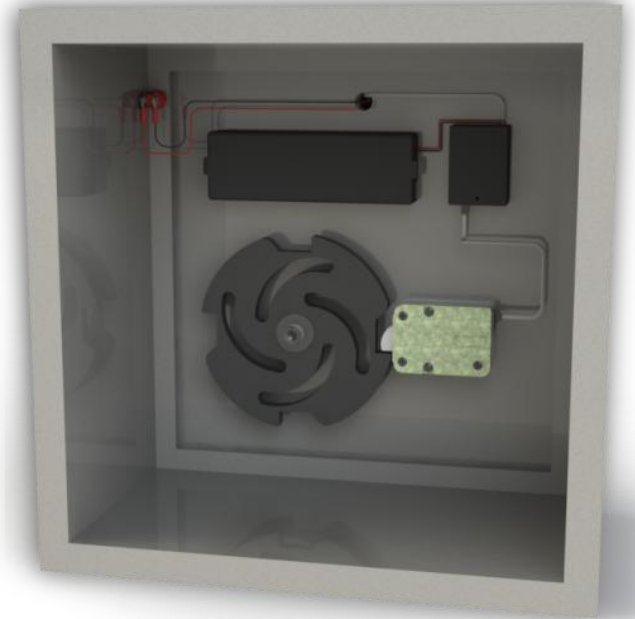
Roman number {I – IV} is the address of each lock which can be the lock ID as well.



IG[®] INTERGARD
DO BRASIL LTDA

Smartgard Dynamic assembly scheme

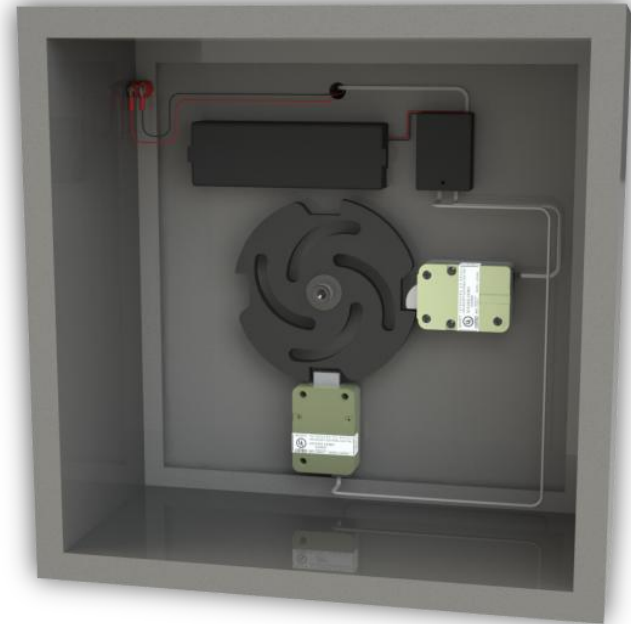
- Smartgard Dynamic with Swingbolt Lock



IG[®] INTERGARD
DO BRASIL LTDA

Smartgard Dynamic assembly scheme

- Smartgard Dynamic with Swingbolt and Deadbolt Locks



IG[®] INTERGARD
DO BRASIL LTDA